

# PRECISION GRINDING



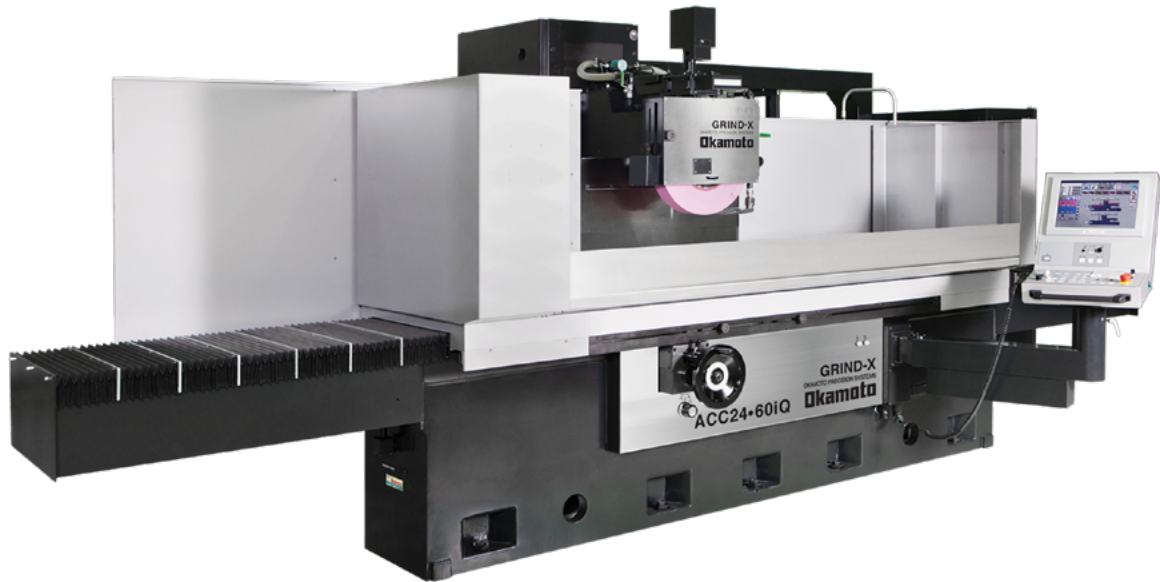
LARGEST STOCK OF **Okamoto** MACHINES IN NORTH AMERICA READY TO SHIP TODAY.



EXCLUSIVE OKAMOTO FULL-SERVICE DISTRIBUTOR

# SURFACE GRINDERS

## COLUMN SERIES



### iQ Series

FANUC Control || Auto Over the Wheel Dress and Compensation || Shift Plunge Capable || Work or Chuck Datum Point || Programmable Dress Cycles

Grinding W: 24"/28"

Grinding L: 48"/60"

Max. Dist. Under Wheel (without chuck): 27.3"

Capacity w/ chuck (lbs.): 5,510 to 5,640

Spindle Motor: 20 hp (30 hp optional)

Weight (lbs.): 16,760 to 22,880

### DX Series

Vertical DRO || 20" wheel

Grinding W: 24"/28"/32"

Grinding L: 48"/60"/80"

Max. Dist. Under Wheel: 27.3"

Capacity (lbs.): 5,510 to 6,170

Spindle Motor: 20 hp (30 hp optional)

Weight (lbs.): 17,200 to 26,900



### DXNC Series

CNC Control || Simultaneous Grinding

Grinding W: 20"/32"

Grinding L: 48"/120"

Max. Dist. Under Wheel: 27.3"

Capacity (lbs.): N/A

Spindle Motor: 20 hp

Weight (lbs.): 16,100 to 34,850



## CA1 Series

Auto Dress/Comp || Auto Retract to Start Position || Single Cast Base Design

Grinding W: 16"/24"

Grinding L: 24"/32"/40"

Max. Dist. Under Wheel (w/o chuck): 19.6" to 20.57"

Capacity w/ chuck (lbs.): 2,205 to 3,307

Spindle Motor: 10 hp (20 hp optional)

Weight (lbs.): 9,921 to 15,432

## CA3 Series

FANUC CNC control, Auto Dress/Comp || Auto Retract to Start Position || Partial Enclosure with Open Top || Single Cast Base Design || Dress from Table & Over the Wheel || Creep Feed Option

Grinding WxL: 16" x 40"

Max. Dist. Under Wheel (w/o chuck): 20.57"

Capacity w/ chuck (lbs.): 2,205

Spindle Motor: 10 hp to 20 hp

Weight (lbs.): 15,432



## CAIQ Series

FANUC CNC Touch Screen Control || Auto Dress/Comp and Auto Retract to Start Position || Partial Enclosure || Radius and Angle Forming Capabilities || Single Cast Base Design || Dress from Table & Over The Wheel

Grinding W: 16"/24"

Grinding L: 24"/32"/40"

Max. Dist. Under Wheel (w/o chuck): 19.6" to 20.57"

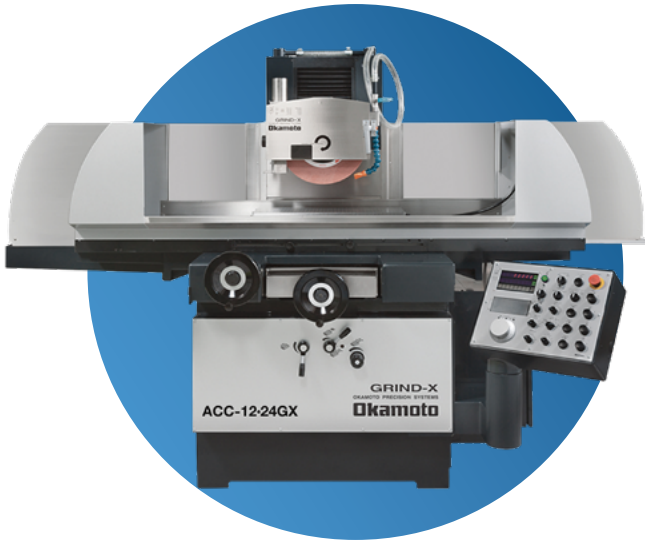
Capacity with chuck (lbs.): 2,205 to 3,307

Spindle Motor: 10 hp

Weight (lbs.): 10,915 to 16,097

# SURFACE GRINDERS

## SADDLE SERIES



### SA1 Series

Auto Dress/Comp || Wheel Speed Control  
 || Retract to Start || Shift Plunge Capable ||  
 Work or Chuck Datum || Dress from Table  
 or Over The Wheel || Touch Screen Control  
 Grinding WxL: 8" x 20" to 20" x 40"  
 Max. Dist. Under Wheel (w/o chuck): 13.6" to 21.5"  
 Capacity with chuck (lbs.): 440 to 1,540  
 Spindle Motor: 2 hp to 5 hp (10 hp optional)  
 Weight (lbs.): 5,250 to 11,380



### GX Series

#### Rapid Vertical Feed

Grinding WxL: 8" x 20" to 20" x 40"  
 Max. Dist. Under Wheel (w/o chuck): 13.6" to 21.5"  
 Capacity w/ chuck (lbs.): 440 to 1,540  
 Spindle Motor: 2 hp to 5 hp (10 hp optional)  
 Weight (lbs.): 5,160 to 11,290



### Linear B Series

Digital Readouts Available  
 Grinding WxL: 6" x 12" to 6" x 18"  
 Spindle Motor: 2 hp  
 Weight (lbs.): 1,850 / 2,070



### NC Series

#### CNC Form Grinder with FANUC Control

Grinding WxL: 8" x 18"  
 Max Dist. Under Wheel (w/o chuck): 14.0"  
 Capacity w/ chuck (lbs.): 265  
 Spindle Motor: 2 hp (3 hp optional)  
 Weight (lbs.): 2,425

# SURFACE GRINDERS

## DOUBLE-COLUMN SERIES

### CHiQ Series

Double Column-Type Grinder || FANUC Touch Screen Control || Adjustable Bridge for Wear || Auto Dress and Compensation || Shift Plunge Capable || 20" x 4" wheel || Chuck Cooling Nozzles || Large Chuck Capacity(40x80) || Hydraulic Temp Regulator Standard

Grinding W: 32"

Grinding L: 80"/100"/140"

Max. Dist. Under Wheel (w/o Chuck): 23.5"

Capacity including chuck (lbs.): 5,512 to 10,580

Spindle Motor: 30 hp

Weight (lbs.): 34,200 to 44,100



### CHNC Series

CNC Double Column-Type Grinder with FANUC CNC Control || Auto Dress and Compensation || Programmable Dress Cycles || Heavy Weight Capacity || 24.0" Wheel Optional || Larger Sizes Available

Grinding W: 60"

Grinding L: 80"/120"

Max. Dist. Under Wheel (does not include chuck): 27.5"

Capacity w/ chuck (lbs.): 11,904 to 17,857

Spindle Motor: 20 hp (30 optional)

Weight (lbs.): 47,399 to 54,013



## ROTARY SERIES



### PRG-DX & DXNC Series

Conventional DX or CNC Control

Chuck Diameter: 24"/32"/40"/48"

Max. Distance Under Wheel: 10.8"

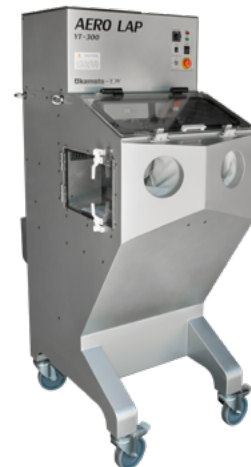
Swing Inside Splashguard: 29.5" to 62.9"

Capacity (lbs.): 330 to 2,860

Spindle Motor: 10 hp

Weight (lbs.): 8,820 to 28,600

## AEROLAP POLISHER



### YT-300

Manual Control System || Enhances Durability and Prolongs Lifespan of Punches || Dies, Small Size Molds and Other Intricate Parts || Uniform Mirror Finishing

Power Requirement: 3-Phase, 200v

Air Pressure: 72 psi

Work Envelope (WxDxH): 19" x 16" x 13"

Footprint: 27.6" x 35.4" x 63"

Weight (lbs.): 550

# INTERNAL GRINDERS



## UGM-5V Series

Versatile Angle Grinding || UGM Tool Changer

Internal Dia. To be Ground: 2.75" ~ 19.7"

Max. Grinding Stroke: 17.75"

Work Rotation Speed: 10 ~ 500 rpm

Wheel Spindle Speed: 500 ~ 8,000 rpm

Spindle Motor: 15 hp

Weight (lbs.): 15,435



## IGM-2MB

Straight Bore Grinder || Auto Dress with Compensation Cycles || Cycle Skip Functionality || Comp Grind Cycles || Program Storage Up to 99 || Single Touch Teach Positioning

Internal Dia. To be Ground: 0.24" ~ 8"

Max. Grinding Stroke: 8"

Swing over Table: 24"

Workhead Swivel: -5 ~ +30 degrees

Spindle Motor: 5 hp

Weight (lbs.): 6,160



## IGM-15NCIII

CNC ID Grinder || FANUC CNC Conversational Control with Touch Screen || Up to 8 cycles in One Set Up || Auto Dress and Comp || Form Dressing as Option || Full Enclosure || Available Spindle Speeds from 10K-60K rpm

Internal Dia. To Ground: 0.24" ~ 6"/8"

Max. Grinding Stroke: 5"

Swing over Table: 24"

Spindle Motor: 5 hp

Weight (lbs.): 5,072



## IGM-15NCIII/2

Twin Spindle CNC ID Grinder || FANUC CNC Conversational Control with Touch Screen || Up to 16 cycles in One Set Up || Auto Dressing with Comp. || Form Dressing is Optional || Full Enclosure || 7.5 HP Spindle Power with Temperature and Speed Control || Compensation Grind Cycles || Available Spindle

Speeds from 10K-60K rpm

Internal Dia. To Ground: 0.24" ~ 4"/6"

Max. Grinding Stroke: 3.2"/5"

Swing over Table: 24"

Spindle Motor: 7.5 hp

Weight (lbs.): 5,300

# CYLINDRICAL GRINDERS



## OGM-8-20UDX

Automatic OD Cycles || ID Attachment ||  
User-Friendly DX Control  
Swing Over Table: 8.6"  
Distance Between Centers: 9.84"  
Max. Grinding Diameter: 7.87"  
Spindle Motor: 2 hp  
Weight (lbs.): 3,370

## UGM-NC Series

Offered With (2) or (3) Heads Including Angle,  
Plain and ID in Any Configuration || FANUC  
CNC Touchscreen Control || Lateral Locator  
Standard Equipment || 0~40,000 RPM ID  
Grinding Head || 15 hp Plain and Angle || 20"  
Diameter Grinding Wheel  
Swing Over Table: 12.6"  
Distance Between Centers: 23.6" (optional 39.4")  
Max. Grinding Diameter: 12"  
Spindle Motor: 15 hp  
Weight (lbs.): N/A

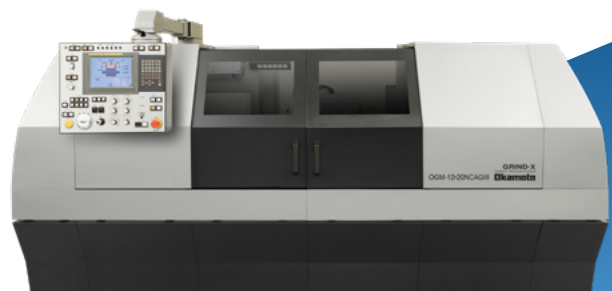


## OGM-12-20UNCIII Series

FANUC Touch Screen Control ||  
Unlimited Grind Cycles || Dress  
with Compensation || Full Forming  
Capabilities || Lateral Locator Standard  
Equipment || Size Gage is Optional ||  
Available With Full Enclosure  
Swing Over Table: 8.6" / 12.6"  
Distance Between Centers: 20"/36"/59"  
Max. Grinding Diameter: 8" to 12"  
Wheel Sizes Available: 12"/14"/16"/20"  
Spindle Motor: 5 hp to 7.5 hp (10 hp optional)  
Weight (lbs.): 7,500 to 13,500

## OGM-12-20NCAGIII Series

Angle Head with FANUC full CNC control ||  
Optional 16.0" Swing || Offered With and Without  
Enclosure || Auto Dressing with Compensation ||  
Lateral Locator Standard Equipment  
Swing Over Table: 12.6" (optional 16")  
Distance Between Centers: 24"  
Max. Grinding Diameter: 12"  
Spindle Motor: 10 hp  
Weight (lbs.): 9,000





**ALL WORLD**

**HEADQUARTERS**

6164 ALL WORLD WAY  
ROSCOE, IL 61073

(815)943-9111

ALLWORLDMACHINERY.COM